

CHAMOT

Recombinant Human HMGB1
(mammalian cell expression)

CM175-5HP
CM175-20HP
CM175-100HP
CM175-500HP
CM175-1000HP



CHAMOT

喬默生物技術(上海)有限公司
CHAMOT BIOTECHNOLOGY CO., LTD.



CONTENT

1 产品简介

2 产品组成

3 产品储存

4 产品使用

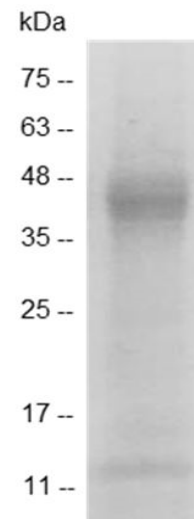
Recombinant Human HMGB1(mammalian cell expression)

编号:	CM175-5HP CM175-20HP CM175-100HP CM175-500HP CM175-1000HP	规格:	5 µg 20 µg 100 µg 500 µg 1 mg
类别:	重组蛋白	应用:	Functional Assay

产品简介

描述: HMGB1 is present in the nuclei (chromatin associated) and cytoplasm of all cells and is a highly conserved protein in variety of species that. In the cytoplasm, HMGB1 is a regulator of autophagy, enhances cell survival, and limits apoptosis. It also can reduce protein aggregation caused by heat or chemical stress. HMGB1 is released to the extracellular milieu by inflammatory cells and by necrotic and apoptotic cells. Once released, it works as an inflammatory cytokine. HMGB1 is also secreted by macrophages and monocytes as a late response to LPS, TNF- α , IL-1 β , or IFN- γ .

来源: HEK293
纯度: >98% as determined by SDS-PAGE. Ni-NTA chromatography.
生物学活性: Measure by its ability to induce TNF α in RAW264.7 cells. The ED₅₀ for this effect is <10 µg/mL.
内毒素检测: <0.1 EU per 1 µg of the protein by the LAL method.
蛋白序列: MGKGDPPKPRGKMSSYAFFVQTCREE
 HKKKHPDASVNFSEFSKKCSERWKTM
 SAKEKGFEDMAKADKARYEREMKTY



SDS- PAGE analysis of recombinant human HMGB1

IPPKGETKKKFKDPNAPKRPPSAFFLFC
 SEYRPKIKGEHPGLSIGDVAKKLGEMW
 NNTAADDKQPYEKKAACLKEKYEKDI
 AAYRAKGKPDAAKKGVVKAEKSKKKK
 EEEEEDEEDEEEEEDEEDEDEEDDD
 DE with polyhistidine SUMO tag at
 the N-terminus

产品组成

成分： 从含有 1X PBS, pH 7.4溶液中冻干的蛋白质.

产品储存/运输

产品形式	储存温度	储存时间
冻干粉	-20°C至-80°C	自收到之日起1年
重悬液 (初始)	2°C至8°C	不超过1周
重悬液 (经稀释)	-20°C至-80°C	3到6个月

运输方式： 蓝冰

产品使用

- 1、开盖前，建议3000-3500rpm离心5min。
- 2、推荐使用无菌水重悬冻干粉，溶液浓度不低于100µg/mL，不高于1mg/mL，并室温静置至少20min以充分溶解。勿涡旋剧烈振荡。
- 3、重悬后的溶液，2-8°C无菌保存不超过1周。
- 4、如需长期保存，推荐使用无菌的含载体蛋白（如0.1%BSA、10%FBS或5%HSA）的溶液进一步稀释（不低于10ug/mL）后分装保存，-20°C至-80°C无菌保存3到6个月。无血清实验需求时，可更换为5%海藻糖溶液作为载体。避免反复冻融。

WB= Western Blot; IP= Immunoprecipitation; IF= Immunofluorescence; IHC= Immunohistochemistry;
 FACS= Fluorescence activated Cell Sorting; FA= Functional Assay